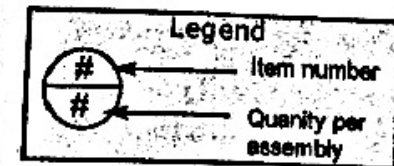


FOR REFERENCE ONLY
CHECK FOR CURRENT REVISION

ILLUSTRATED BREAK OUT

100-1674-030

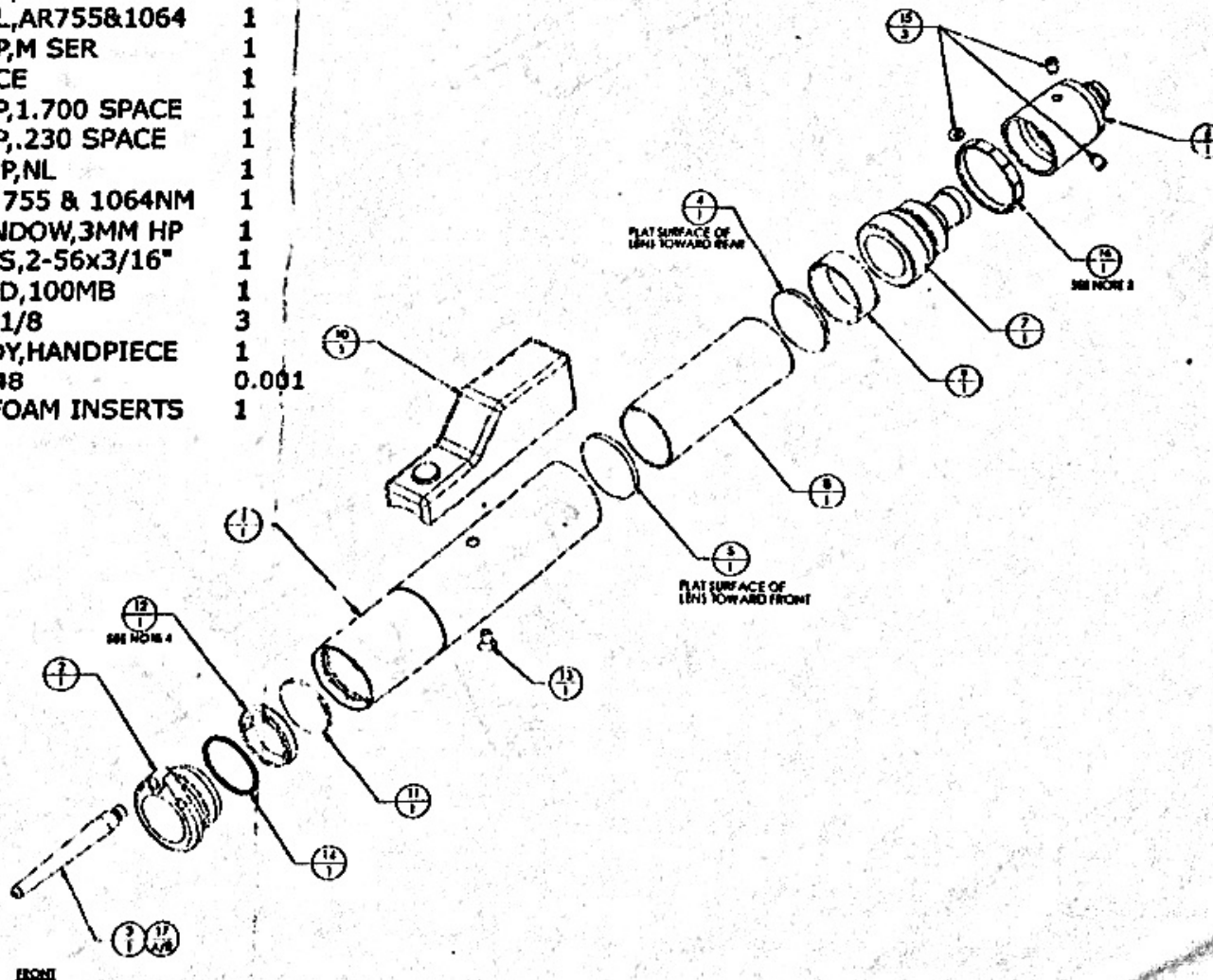
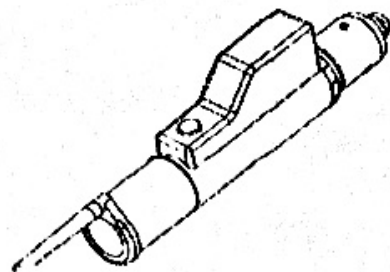
ASSY, 3MM HANDPIECE, NL (Rev. A)



ITEM #	PART NUMBER	DESCRIPTION	QTY
1	139-5350-700	RWK, LENS BODY, 3MM HP, GREEN	1
2	130-4543-000	HOLDER, REUSABLE HP TIP	1
3	130-4544-000	TIP, REUSABLE, HP	1
4	805-1836-003	LENS, PL/CVX, 18X36FL, AR755&1064	1
5	805-1854-003	LENS, PL/CVX, 18X54FL, AR755&1064	1
6	130-4983-000	PLUG, ADJUSTMENT, HP, M SER	1
7	130-5349-000	REAR BODY, HANDPIECE	1
8	130-5355-000	LENS SPACER, 3MM HP, 1.700 SPACE	1
9	130-5356-000	LENS SPACER, 3MM HP, .230 SPACE	1
10	100-1675-030	ASSY, TRIG SW, 3MM HP, NL	1
11	805-0034-003	WINDOW, .625 DIA, AR 755 & 1064NM	1
12	130-5351-000	LOCK RING, DUST WINDOW, 3MM HP	1
13	285-1000-205	SCR, FLHD SL MACH, SS, 2-56x3/16"	1
14	298-5000-500	SPRING, RADIAL, .500 ID, 100MB	1
15	284-5044-002	SCR, SET, BR TIP, 4-40x1/8	3
16	130-5364-000	LOCK RING, REAR BODY, HANDPIECE	1
17	160-8000-002	ADHESIVE, LOCTITE, 248	0.001
18	651-0032-000	CASE, HANDPIECE, W/FOAM INSERTS	1

NOTES:

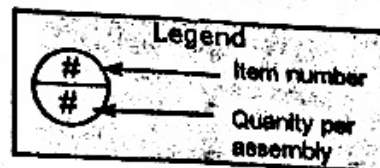
- BEFORE ASSEMBLING CLEAN ALL FABRICATED PARTS IN ULTRASONIC CLEANER.
- ASSEMBLE IN CLEAN HOOD ONLY. CHECK FOR DUST ON LENS SURFACES. WEAR FINGER COATS (706-00-3-003) IF DUST IS PRESENT. CLEAN LENSES AND REASSEMBLE. PLACE ASSEMBLY IN PLASTIC BAG UPON COMPLETION.
- USE WRENCH 704-0173-000 TO SECURE.
- USE KEY 130-4871-600 TO SECURE.
- CALIBRATE PER PROCEDURE P91-4306-364.



FOR REFERENCE ONLY
CHECK FOR CURRENT REVISION

ILLUSTRATED BREAK OUT

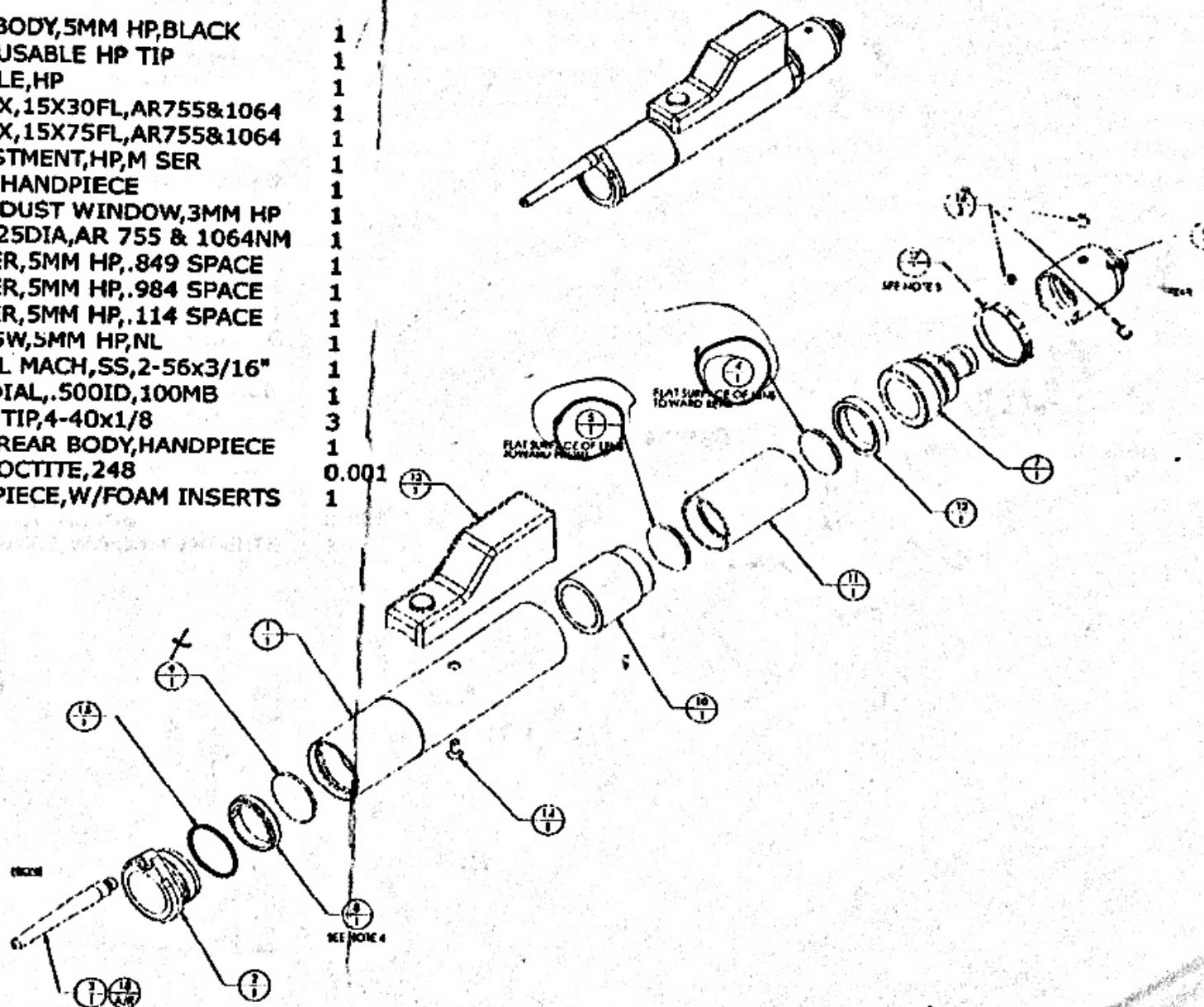
100-1676-050
ASSY, 5MM HANDPIECE, NL (Rev. A)



ITEM #	PART NUMBER	DESCRIPTION	QTY
1	139-5350-400	RWK, LENS BODY, 5MM HP, BLACK	1
2	130-4543-000	HOLDER, REUSABLE HP TIP	1
3	130-4544-000	TIP, REUSABLE, HP	1
4	805-1530-003	LENS, PL/CVX, 15X30FL, AR755&1064	1
5	805-1570-003	LENS, PL/CVX, 15X75FL, AR755&1064	1
6	130-4983-000	PLUG, ADJUSTMENT, HP, M SER	1
7	130-5349-000	REAR BODY, HANDPIECE	1
8	130-5351-000	LOCK RING, DUST WINDOW, 3MM HP	1
9	805-0034-003	WINDOW, .625DIA, AR 755 & 1064NM	1
10	130-5353-000	LENS SPACER, 5MM HP, .849 SPACE	1
11	130-5352-000	LENS SPACER, 5MM HP, .984 SPACE	1
12	130-5354-000	LENS SPACER, 5MM HP, .114 SPACE	1
13	100-1677-050	ASSY, TRIG SW, 5MM HP, NL	1
14	285-1000-205	SCR, FLHD SL MACH, SS, 2-56x3/16"	1
15	298-5000-500	SPRING, RADIAL, .500ID, 100MB	1
16	284-5044-002	SCR, SET, BR TIP, 4-40x1/8	3
17	130-5364-000	LOCK RING, REAR BODY, HANDPIECE	1
18	160-8000-002	ADHESIVE, LOCTITE, 248	0.001
19	651-0032-000	CASE, HANDPIECE, W/FOAM INSERTS	1

NOTES:

- BEFORE ASSEMBLING, CLEAN ALL FABRICATED PARTS IN ULTRASONIC CLEANER.
- ASSEMBLE IN CLEAN HOOD ONLY. CHECK FOR DUST ON LENS SURFACES. WEAR FINGER COTS (706-0063-003) IF DUST IS PRESENT. CLEAN LENSES AND REASSEMBLE. PLACE ASSEMBLY IN PLASTIC BAG UPON COMPLETION.
- USE WRENCH 706-0173-000 TO SECURE.
- USE KEY 130-4872-400 TO SECURE.
- CALIBRATE PER PROCEDURE 991-4506-364.



FOR REFERENCE ONLY
CHECK FOR CURRENT REVISION

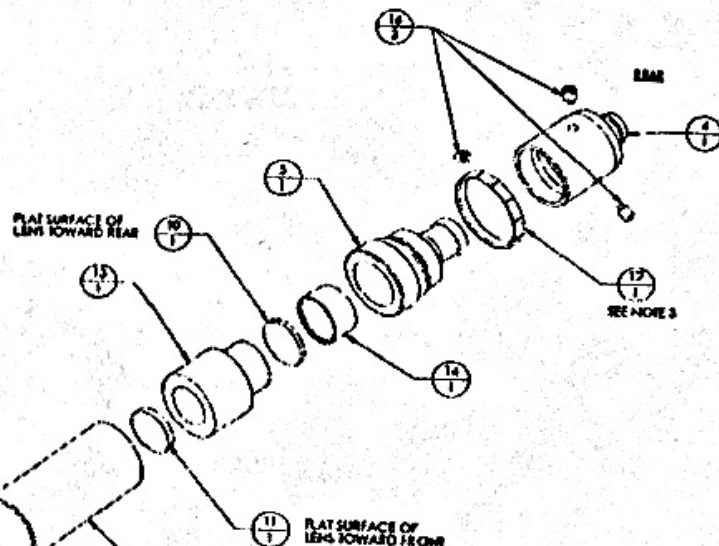
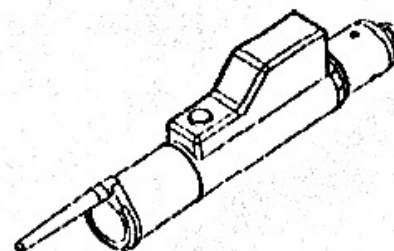
ILLUSTRATED BREAK OUT

100-1678-070

ASSY, 7MM HANDPIECE, NL (Rev. A)

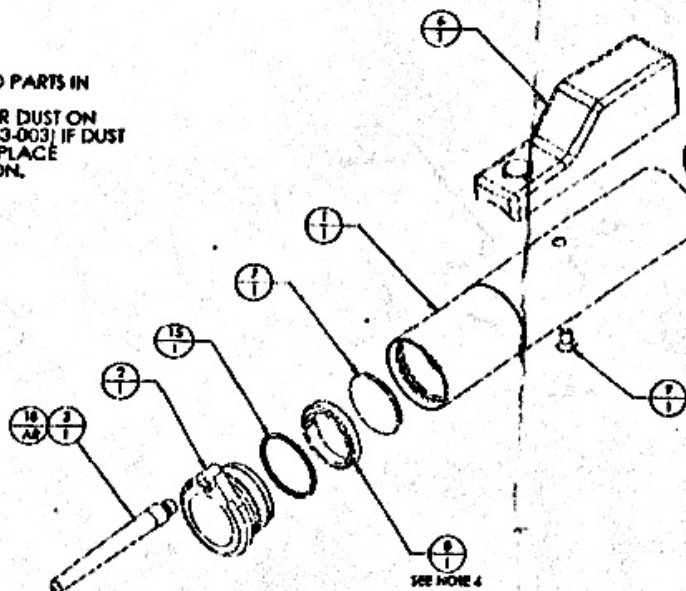


ITEM #	PART NUMBER	DESCRIPTION	QTY
1	139-5350-600	RWK, LENS BODY, 7MM HP, CLEAR	1
2	130-4543-000	HOLDER, REUSABLE HP TIP	1
3	130-4544-000	TIP, REUSABLE, HP	1
4	130-4983-000	PLUG, ADJUSTMENT, HP, M SER	1
5	130-5349-000	REAR BODY, HANDPIECE	1
6	100-1679-070	ASSY, TRIG SW, 7MM HP, NL	1
7	805-0034-003	WINDOW, .625 DIA, AR 755 & 1064NM	1
8	130-5351-000	LOCK RING, DUST WINDOW, 3MM HP	1
9	285-1000-205	SCR, FLHD SL MACH, SS, 2-56x3/16"	1
10	805-1224-003	LENS, PL/CVX, 12X24FL, AR755&1064	1
11	805-1248-003	LENS, PL/CVX, 12X48FL, AR755&1064	1
12	130-5358-000	LENS SPACER, 7MM HP, 1.382 SPACE	1
13	130-5359-000	LENS SPACER, 7MM HP, .802 SPACE	1
14	130-5360-000	LENS SPACER, 7MM HP, .175 SPACE	1
15	298-5000-500	SPRING, RADIAL, .500 ID, 100MB	1
16	284-5044-002	SCR, SET, BR TIP, 4-40x1/8	3
17	130-5364-000	LOCK RING, REAR BODY, HANDPIECE	1
18	160-8000-002	ADHESIVE, LOCTITE, 248	0.001
19	651-0032-000	CASE, HANDPIECE, W/FOAM INSERTS	1



NOTES:

1. BEFORE ASSEMBLING, CLEAN ALL FABRICATED PARTS IN ULTRASONIC CLEANER.
2. ASSEMBLE IN CLEAN HOOD ONLY, CHECK FOR DUST ON LENS SURFACES WEAR FINGER COATS (706-0043-003) IF DUST IS PRESENT, CLEAN LENSES AND REASSEMBLE. PLACE ASSEMBLY IN PLASTIC BAG UPON COMPLETION.
3. USE WRENCH 706-0173-000 TO SECURE.
4. USE KEY 130-4872-400 TO SECURE.
5. CALIBRATE PER PROCEDURE 991-4506-364.

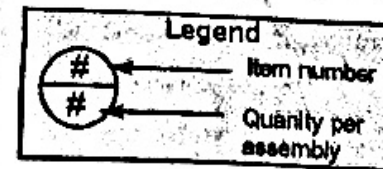


FOR REFERENCE ONLY
CHECK FOR CURRENT REVISION

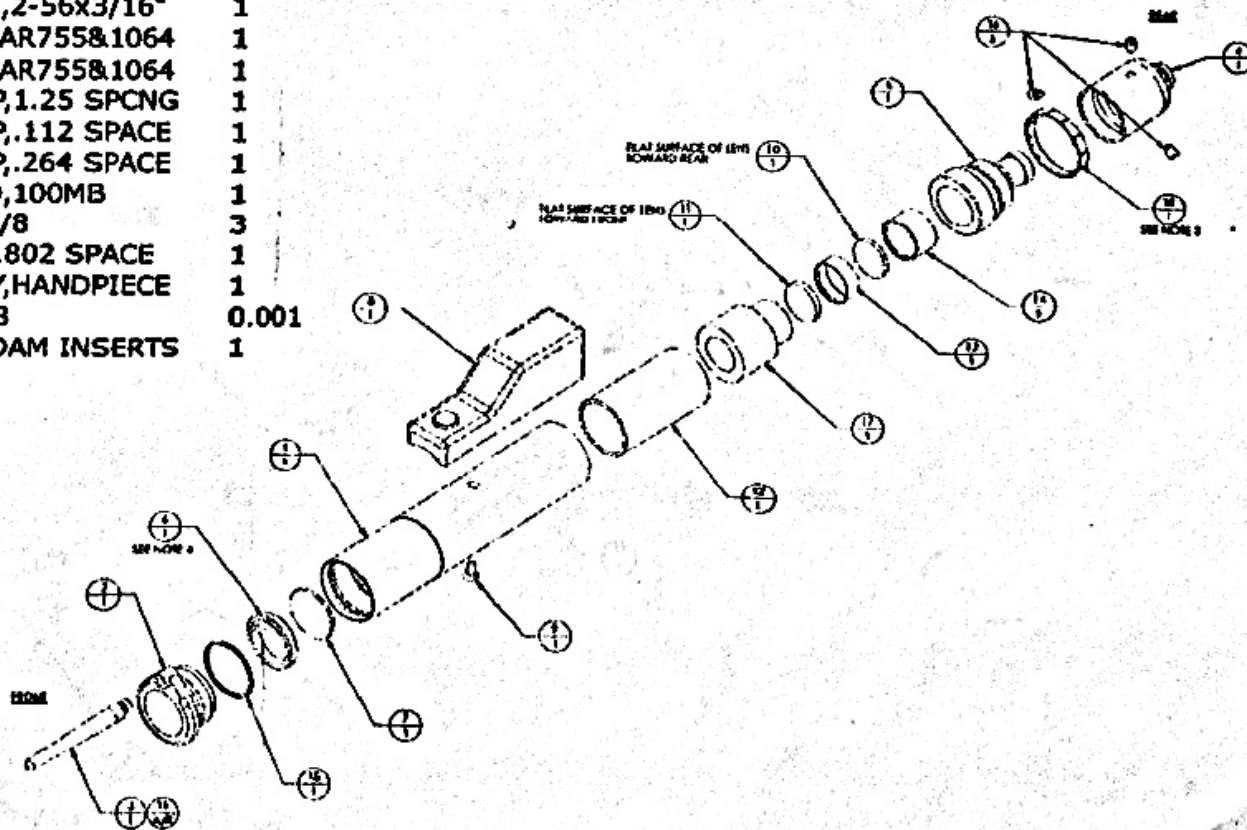
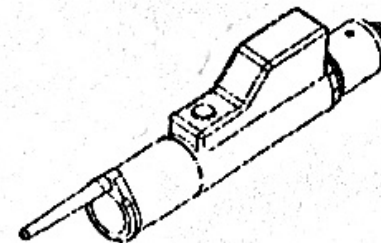
ILLUSTRATED BREAK OUT

100-1680-100

ASSY, 10MM HANDPIECE, NL (Rev. A)



ITEM #	PART NUMBER	DESCRIPTION	QTY
1	139-5350-600	RWK, LENS BODY, 7MM HP, CLEAR	1
1	139-5350-100	RWK, LENS BODY, 10MM HP, GOLD	1
2	130-4543-000	HOLDER, REUSABLE HP TIP	1
3	130-4544-000	TIP, REUSABLE, HP	1
4	130-4983-000	PLUG, ADJUSTMENT, HP, M SER	1
5	130-5349-000	REAR BODY, HANDPIECE	1
6	130-5351-000	LOCK RING, DUST WINDOW, 3MM HP	1
7	805-0034-003	WINDOW, .625 DIA, AR 755 & 1064NM	1
8	100-1681-100	ASSY, TRIG SW, 10MM HP, NL	1
9	285-1000-205	SCR, FLHD SL MACH, SS, 2-56x3/16"	1
10 B	805-1224-003	LENS, PL/CVX, 12X24FL, AR755&1064	1
11 F	805-1248-003	LENS, PL/CVX, 12X48FL, AR755&1064	1
12	130-5361-000	LENS SPACER, 10MM HP, 1.25 SPCNG	1
13	130-5362-000	LENS SPACER, 10MM HP, .112 SPACE	1
14	130-5363-000	LENS SPACER, 10MM HP, .264 SPACE	1
15	298-5000-500	SPRING, RADIAL, .500ID, 100MB	1
16	284-5044-002	SCR, SET, BR TIP, 4-40x1/8	3
17	130-5359-000	LENS SPACER, 7MM HP, .802 SPACE	1
18	130-5364-000	LOCK RING, REAR BODY, HANDPIECE	1
19	160-8000-002	ADHESIVE, LOCTITE, 248	0.001
20	651-0032-000	CASE, HANDPIECE, W/FOAM INSERTS	1



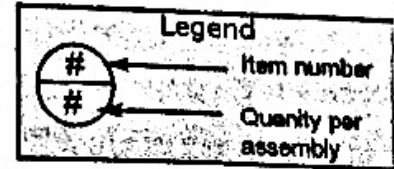
NOTES:

- BEFORE ASSEMBLING, CLEAN ALL FABRICATED PARTS IN ULTRASONIC CLEANER.
- ASSEMBLE IN CLEAN HOOD ONLY. CHECK FOR DIRT ON LENS SURFACES WEAR FINGER COTS (704-0043-003) IF DIRT IS PRESENT, CLEAN LENSES AND REASSEMBLE. PLACE ASSEMBLY IN PLASTIC BAG UPON COMPLETION.
- USE WRENCH 704-0173-000 TO SECURE.
- USE KEY 130-4872-400 TO SECURE.
- CALIBRATE PER PROCEDURE 991-4506-344.

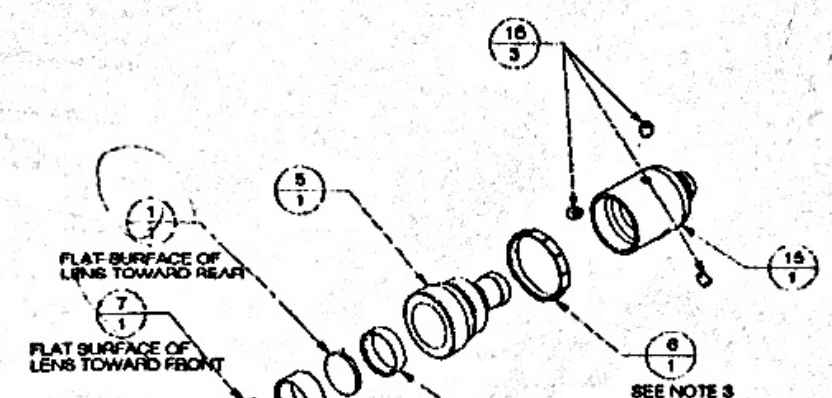
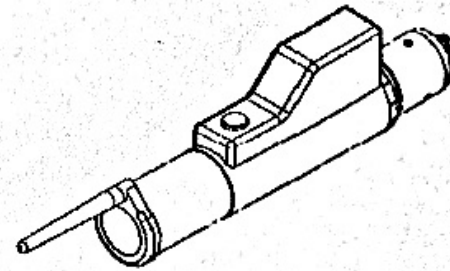
FOR REFERENCE ONLY
CHECK FOR CURRENT REVISION

ILLUSTRATED BREAK OUT

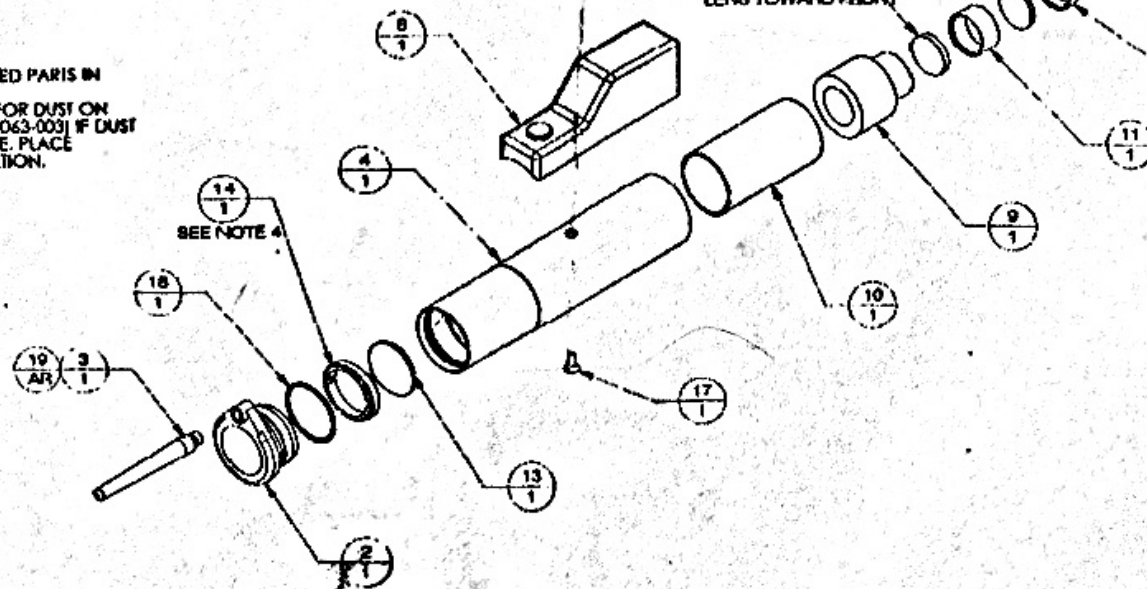
100-1672-120
ASSY, 12MM HANDPIECE, NL (Rev. A)



ITEM #	PART NUMBER	DESCRIPTION	QTY
1	805-1224-003	LENS, PL/CVX, 12X24FL, AR755&1064	1
2	130-4543-000	HOLDER, REUSABLE HP TIP	1
3	130-4544-000	TIP, REUSABLE, HP	1
4	139-5350-500	RWK, LENS BODY, 12MM HP, VIOLET	1
5	130-5349-000	REAR BODY, HANDPIECE	1
6	130-5364-000	LOCK RING, REAR BODY, HANDPIECE	1
7	805-1230-003	LENS, PL/CVX, 12X30FL, AR755&1064	1
8	100-1673-120	ASSY, TRIG SW, 12MM HP, NL	1
9	130-5359-000	LENS SPACER, 7MM HP, .802 SPACE	1
10	130-5365-000	LENS SPACER, FRNT, 1.338, 12MM HP	1
11	130-5366-000	LENS SPACER, .168, 12MM HP	1
12	130-5367-000	LENS SPACER, .115 SPCNG, 12MM HP	1
13	805-0034-003	WINDOW, .625DIA, AR 755 & 1064NM	1
14	130-5351-000	LOCK RING, DUST WINDOW, 3MM HP	1
15	130-4983-000	PLUG, ADJUSTMENT, HP, M SER	1
16	284-5044-002	SCR, SET, BR TIP, 4-40x1/8	3
17	285-1000-205	SCR, FLHD SL MACH, SS, 2-56x3/16"	1
18	298-5000-500	SPRING, RADIAL, .500ID, 100MB	1
19	160-8000-002	ADHESIVE, LOCTITE, 248	0.001
20	651-0032-000	CASE, HANDPIECE, W/FOAM INSERTS	1



- NOTES:
1. BEFORE ASSEMBLING, CLEAN ALL FABRICATED PARTS IN ULTRASONIC CLEANER.
 2. ASSEMBLE IN CLEAN HOOD ONLY. CHECK FOR DUST ON LENS SURFACES WEAR FINGER COTS (706-0063-003) IF DUST IS PRESENT, CLEAN LENSES AND REASSEMBLE. PLACE ASSEMBLY IN PLASTIC BAG UPON COMPLETION.
 3. USE WRENCH 706-0173-000 TO SECURE.
 4. USE KEY 130-4872-000 TO SECURE.
 5. CALIBRATE PER PROCEDURE 991-4506-364.



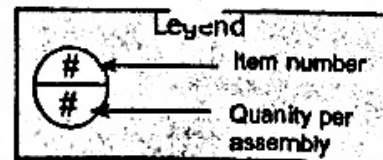
90 - lens

FOR REFERENCE ONLY
CHECK FOR CURRENT REVISION

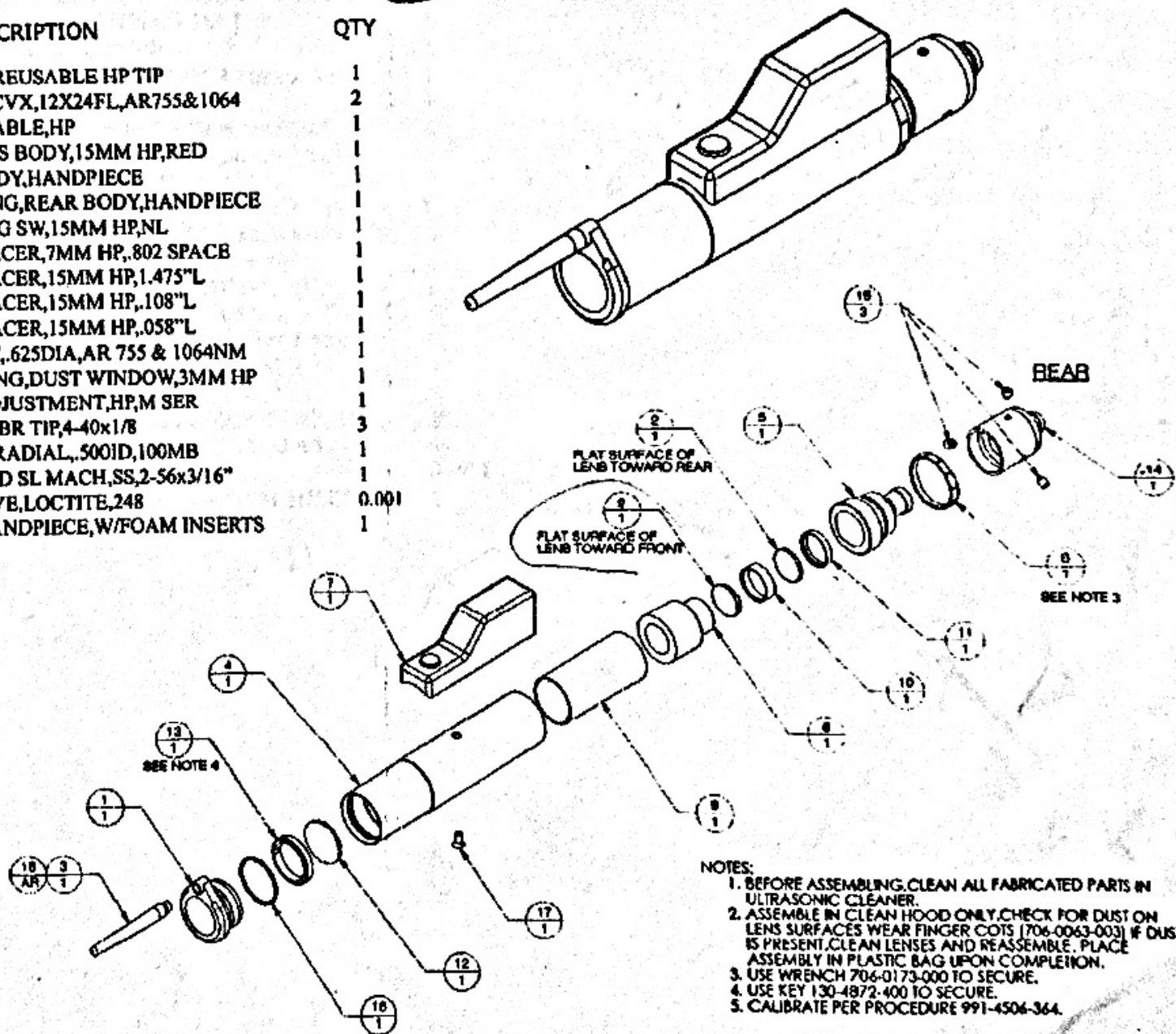
ILLUSTRATED BREAK OUT

100-1685-150 Rev A

ASSY
HANDPIECE, 15MM, NL



ITEM #	PART NUMBER	DESCRIPTION	QTY
1	130-4543-000	HOLDER, REUSABLE HP TIP	1
2	805-1224-003	LENS, PL/CVX, 12X24FL, AR755&1064	2
3	130-4544-000	TIP, REUSABLE, HP	1
4	139-5350-300	RWK, LENS BODY, 15MM HP, RED	1
5	130-5349-000	REAR BODY, HANDPIECE	1
6	130-5364-000	LOCK RING, REAR BODY, HANDPIECE	1
7	100-1686-150	ASSY, TRIG SW, 15MM HP, NL	1
8	130-5359-000	LENS SPACER, 7MM HP, 802 SPACB	1
9	130-5371-000	LENS SPACER, 15MM HP, 1.475"L	1
10	130-5372-000	LENS SPACER, 15MM HP, 1.08"L	1
11	130-5373-000	LENS SPACER, 15MM HP, .058"L	1
12	805-0034-003	WINDOW, .625DIA, AR 755 & 1064NM	1
13	130-5351-000	LOCK RING, DUST WINDOW, 3MM HP	1
14	130-4983-000	PLUG, ADJUSTMENT, HP, M SER	1
15	284-5044-002	SCR, SET, BR TIP, 4-40x1/8	3
16	298-5000-500	SPRING, RADIAL, .500ID, 100MB	1
17	285-1000-205	SCR, FLHD SL MACH, SS, 2-56x3/16"	1
18	160-8000-002	ADHESIVE, LOCTITE, 248	0.001
19	651-0032-000	CASE, HANDPIECE, W/FOAM INSERTS	1



- NOTES:
1. BEFORE ASSEMBLING, CLEAN ALL FABRICATED PARTS IN ULTRASONIC CLEANER.
 2. ASSEMBLE IN CLEAN HOOD ONLY. CHECK FOR DUST ON LENS SURFACES WEAR FINGER COTS (706-0063-003) IF DUST IS PRESENT. CLEAN LENSES AND REASSEMBLE. PLACE ASSEMBLY IN PLASTIC BAG UPON COMPLETION.
 3. USE WRENCH 704-0173-000 TO SECURE.
 4. USE KEY 130-4872-400 TO SECURE.
 5. CALIBRATE PER PROCEDURE 991-4506-364.